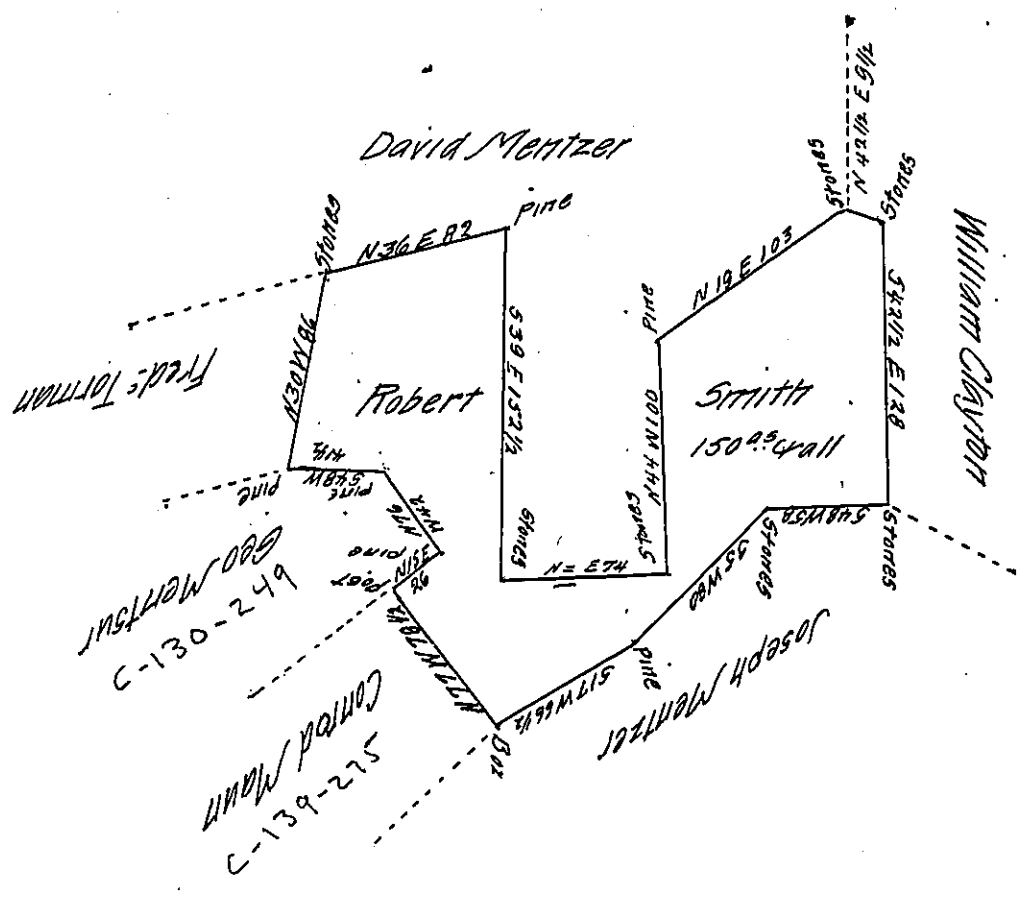


FORM No. 1.



A Draught of a Tract of Land situated in Washington Township Franklin County
 Containing One hundred and fifty acres and allowance of six Part for Road's 40. Surveyed
 May 18th 1808 for Samuel Hughes Esq. in pursuance of a Warrant granted Robert Smith Dated
 September 6th 1792 by Joseph Strively Junr. Asst. Surveyor for Thomas Kirby Esq. late Dept.
 Surveyor, as appears by an official Draught remaining in my office

Certified this 6th day of March 1810.

To Andrew Porter Esq.
 Surveyor General of Penna.

Thomas Poe D.S.

IN TESTIMONY that the above is a copy of the original remaining on file in
 the Department of Internal Affairs of Pennsylvania, made
 conformably to an Act of Assembly approved the 16th day of
 February 1833, I have hereunto set my hand and caused
 the Seal of said Department to be affixed at Harrisburg,
 this second day of May 1907

Henry Howard
 Secretary of Internal Affairs.